



# **Service-Learning Student Leaders**

**Spring 2019**



# Chelsea Lauder

S-L Program Assistant; S-L Team Manager



## College:

College of Social Sciences  
and Humanities

## Major(s):

Human Services &  
International Affairs

## Minor(s):

Global Social  
Entrepreneurship

## Hometown:

Sturgeon Bay, WI

What animal do you relate to  
most and why?

A mountain goat!! I love to hike,  
love to wander around (and  
usually end up being the one who  
randomly separates from my  
group) PLUS mountain goats are  
so cute - goats are literally the  
G.O.A.T.

What would your ideal  
habitat be and why?

that mid-mountain climate!  
Very diverse flora & fauna...  
plus the mountains are the  
greatest place to be... basically  
always....



# Rachel Eng

## S-LTA for Marketing in the Service Sector



### College:

Bouvé College of  
Health Sciences

### Major(s):

Health Sciences

### Minor(s):

Global Health

### Hometown:

Wyckoff, NJ

What animal do you relate to  
most and why?

A dog! My dog is my best friend,  
and dogs are probably the most  
loyal, unconditionally loving  
pets out there.

What would be your ideal habitat?

The Mountains



# Alexandra Dittrich

## S-LTA for Management Consulting in Organizations



### College:

D'Amore-McKim  
School of Business

### Major(s):

Business Administration

### Minor(s):

Global Social  
Entrepreneurship  
& Psychology

### Hometown:

Newtown, CT

If you could create your own  
animal hybrid, what would it be?

I would be a dolphoenix (part  
dolphin part Phoenix) - that way  
I could experience all the land  
and ocean this world has too  
offer. I'd be able to soar in the  
sky, swim through the ocean,  
and come back to life!

What would your ideal habitat be?

My ideal habitat would be a  
little nest high up in the trees  
overlooking the ocean shore.



# Alexandra Castillejo

## S-LTA for Consultation Skills



### College:

College of Social Sciences  
and Humanities

### Major(s):

Environmental Science

### Minor(s):

Spanish

### Hometown:

Newtown, PA

### What animal do you relate to most and why?

I relate most to a dolphin, not for any reason relating to their marine habitat but because of how caring they are. The stories of what they do to save or protect each other and other animals--even humans!--are remarkable.

### What animal do you feel you most closely resemble?

I've been told I resemble a lion, and I wouldn't disagree with that... Especially on a bad hair day.

### What would your ideal habitat be?

My ideal habitat would be mountains: always new heights to reach and amazing views to take in. I also love snow, and there's always a chance for snow on mountain peaks!



# Cederick Paulli

## S-LTA for Skills for Advanced Chinese 1



### College:

Bouvé College of  
Health Sciences

### Major(s):

Physical Therapy

### Minor(s):

Chinese &  
Environmental Studies

### Hometown:

Singapore, Singapore

What animal do you relate to  
most and why?

I relate to a sloth, we have very  
similar life philosophies.

If you could create your own  
animal hybrid, what would it be?

A walrus with the head of a sea  
lion.

What would your ideal habitat be?

A forest in the mountains, they  
are a surreal place to be.



# Yulin Zhou

## S-LTA for Advanced Chinese 2



### College:

College of Social Sciences  
and Humanities

### Major(s):

Sociology &  
Political Science

### Minor(s):

Theatre

### Hometown:

China

### What animal do you relate to most and why?

I think I relate to dogs the most. There's something about a dog's warm, expressive eyes that'll charm your socks off every time. Dog personalities feature many of the characteristics of the canine family and are some of the kindest, warmest creatures in the animal kingdom. Although they border on the predictable, they're never boring or eccentric.

### What animal do you feel you most closely resemble?

Honey Badgers because honey badgers are fearless and they don't care how hard they have to fight for their life. They do, and they enjoy everything they can eat!

### If you could create your own animal hybrid, what would it be?

Dog Badger. The combination between dogs and honey badgers. Be as loyal as a dog and as feisty as a honey badger



# Rebecca Green

## S-LTA for The Nonprofit Sector, Philanthropy, and Social Change



### College:

College of Social Sciences  
and Humanities

### Major(s):

Sociology

### Minor(s):

Women, Gender and  
Sexuality Studies

### Hometown:

San Francisco, CA

### What animal do you relate to most and why?

I relate the most to deer. I think they are very gentle, thoughtful and observant animals, but who can spring to action when they need to. I think of myself as being similar, gentle and patient in my approach to the world and people, but itching to leap into action whenever I can.

### What would your ideal habitat be?

My ideal habitat would be in the sea. I grew up on the West Coast 10 minute drive from the beach, and my family generations back is from an island off the south coast of England. A love for water is in my genes, and I would love nothing more than to live in the beautiful ocean with all of its fascinating critters.



# Jessica Lynch-Foust

## S-LTA for Marketing and Society



### College:

College of Social Sciences  
and Humanities

### Major(s):

International Affairs &  
Human Services

### Minor(s):

Global Social Entrepreneurship

### Hometown:

Burlington, VA

### What animal do you relate to most and why?

Cat, paws down. I'm finicky, like to spend time by myself, sleep a lot and spend a lot of time lying down, very food motivated, and sometimes entirely too affectionate (but only sometimes, other times don't even look at me). And I rely on getting away with bad behavior based on being cute. I am a cat.

### What would your ideal habitat be and why?

Mountains! For a couple of reasons. I like hiking, I like how the air feels and smells in the forest, and a good portion of the animals that live in the mountains in the Northeast for example hibernate in the winter, and I feel like that is an ideal option.



# Cameron Barone

## S-LTA for First-Year Writing



### College:

College of Social Sciences  
and Humanities

### Major(s):

English &  
Communications

### Minor(s):

International Affairs

### Hometown:

Ronkonkoma, NY

### What animal do you relate to most and why?

I most closely relate to a bear because they hibernate for long periods of time, and they eat berries and shrubs.

### What is your favorite dessert?

I feel that I most closely resemble a lion because my long blonde hair looks very much like a mane when it isn't straight.

### If you could create your own animal hybrid, what would it be?

I would combine an elephant and an ant-eater to make a little elephant with an extra long snout. My goal is to maximize nose length, and minimize body size.

### What would your ideal habitat be and why?

The Chili's at O'Hare airport in Chicago is really bad, I'd like to avoid eating anything from there again.



# Dante Del Priore

S-LTA for Math, Magic, Puzzles & Games



College:

College of Science

Major(s):

Cell and Molecular Biology

Minor(s):

Psychology

Hometown:

Manhattan, NY

If you could create your own animal hybrid, what would it be?

If I could create an animal hybrid it would be a cog, a dog-cat hybrid. Dogs and cats both have their merits to them and I love both. Together however, they could become the ultimate house pet the Cog (or Dat).

What would your ideal habitat be and why?

My ideal habitat would be under the sea. Under the sea is the best area because it gives an extra range of motion, as most aquatic creatures can swim up and down as well as travel along the seafloor. Under the sea would be cool too because of all the beautiful coral and interesting sea life that would be there as well.



# Erykah Gomes

S-L Team Manager



## College:

College of Social Sciences  
and Humanities

## Major(s):

Political Science &  
International Affairs

## Minor(s):

N/A

## Hometown:

Luanda, Angola

What animal do you relate to  
most and why?

Birds! They are free to go  
wherever they want!

What would your ideal  
habitat be and why?

I only need sand and the ocean  
to be happy, so my ideal  
habitat would be anywhere  
near the sea.



# Lauren Scornavacca

## S-LTA for Cornerstones of Engineering 2



### College:

College of Engineering

### Major(s):

Industrial Engineering

### Minor(s):

Experience Design

### Hometown:

Denville, NJ

If you could create your own animal hybrid, what would it be?

Flapigo! (a pig flamingo). Well for starters-- doesn't that just sound awesome? When I was in high-school I worked at a theatre camp and we convinced our students that there was a wild flapigo living in the woods and that's why they weren't allowed over there. Some days he would even say thank you for not trampling his home and would leave us rainbow cookies!

What would your ideal habitat be and why?

My ideal habitat would be the mountains! I like the idea of having tons of little nooks and crannies to explore.



# Alex Spak

## S-LTA for Cornerstones of Engineering 2



### College:

College of Engineering

### Major(s):

Bioengineering

### Minor(s):

N/A

### Hometown:

Rumson, NJ

If you could create your own animal hybrid, what would it be?

I would create an animal that looks like a butterfly but has the loyalty and brain of a dog, so it could travel with me everywhere and we could be buddies.

What would be your ideal habitat and why?

My ideal habitat is under the sea living in the coral reefs. I love the ocean and ocean creatures and would love to swim all day.



# Marielle Hidalgo

## S-LTA for Information Visualization: Theory and Applications



### College:

College of Professional  
Studies

### Current Program:

MS in Leadership & Human  
Resource Management

### Minor(s):

N/A

### Hometown:

Lima, Peru

What animal do you relate to  
most and why?

The dolphin because is always  
happy, is friendly and live with  
their dolphin peers all time.

What would your ideal  
habitat be and why?

The sea because is huge and  
clean and I can be free.



# Julia Barnes-Brown

S-L Co-op and Program Assistant;  
S-LTA for Writing and Community Engagement



## College:

College of Social Science  
and Humanities

## Major(s):

Human Services &  
International Affairs

## Minor(s):

N/A

## Hometown:

Needham, MA

## What animal do you feel you most closely resemble?

A golden retriever. I'm mainly calm, quiet, and laid-back, but around my friends and people who share my interests I get wildly enthusiastic. Plus I'm 100% okay acting totally silly (occasionally at unexpected times!).

## If you could create your own animal hybrid, what would it be ?

Probably an eagle and a horse (don't ask me to name it; no mashup of those words works!!). Because I desperately wanted flying horses to exist when I was little-- and maybe still do, shh ;) And an eagle seems an appropriately majestic creature to merge with another beautiful animal. But where to fit in those talons...?



# Mike Henetz

## S-LTA for Video Basics



### College:

D'Amore-McKim  
School of Business

### Major(s):

Management

### Minor(s):

N/A

### Hometown:

Stratford, CT

What animal do you relate to  
most and why?

A frog because I like to jump  
around to different places.

If you could create a animal  
hybrid, what would it be?

A would create a whale dog  
because I think it would be cool  
to swim with a giant dog.

What animal do you feel you  
most closely resemble?

I think I resemble a kangaroo.

If you could create a animal  
hybrid, what would it be?

Tropical rain forest because I'm  
a frog.



# Elizabeth Pier

## S-LTA for Inquiries in Biological Sciences



### College:

College of Science

### Major(s):

Behavioral Neuroscience

### Minor(s):

French

### Hometown:

Sudbury, MA

### What is the most exotic food you've ever tried?

I would create a hybrid between a penguin and a zebra because it would look like a penguin but with the stripes of a zebra and I think it would look funny.

### What would your ideal habitat be and why?

My ideal habitat would be mountains and a lake. I spend my summers on a lake and I love all sorts of water activities. I enjoy being outside in nature, and I love camping and hiking.



# Emily Perez

## S-LTA for Advanced Spanish: Global Communications



### College:

College of Social Sciences  
and Humanities &  
College of Arts, Media  
and Design

### Major(s):

Communications &  
English Literature

### Minor(s):

Film Production &  
Global Fashion Studies

### Hometown:

Rochester, NY

What animal do you relate to  
most and why?

I most relate to a dog because of  
their kind, relaxed, and loyal  
nature.

What would your ideal habitat  
be and why?

My ideal habitat would be in  
warm weather near a hidden  
white sandy beach surrounded  
by mountains. I would be  
outside all the time and swim  
in the clear blue water.



# Simone Harrell

S-L Team Manager;  
S-LTA for Cornerstones of Engineering 1 & 2



## College:

College of Social Sciences  
and Humanities

## Major(s):

Political Science

## Minor(s):

Human Services

## Hometown:

East Hampton, CT

What animal do you relate to  
most and why?

An owl is my spirit animal. I'm a  
really great observer and  
listener, which I feel meshes well  
with an owl's personality.

What would your ideal  
habitat be and why?

The best habitat hands down is  
the beach. I'm not sure if this  
really qualifies as a habitat,  
but I thrive in the sunshine,  
warmth, and salt water.



# Olivia Olcott

## S-LTA for First-Year Writing



### College:

College of Social Sciences  
and Humanities

### Major(s):

Human Services &  
International Affairs

### Minor(s):

Spanish

### Hometown:

Hopewell, NJ

### What animal do you relate to most and why?

I definitely relate to a golden retriever. My friends often tell me that I remind them of a golden because I'm easily entertained and I am incredibly loyal and affectionate towards my friends. I too am easily excitable about the tasks put in front of me, no matter how seemingly menial.

### If you could create your own animal hybrid, what would it be?

I would create a dorse, which is part dog and part horse. This way, I could ride a giant dog around campus and get places much faster.

### What would your ideal habitat be?

I would like to live in the woods surrounded by really tall evergreen trees.



# Lilah Keegan

## S-LTA for Connections & Decisions



### College:

College of Arts, Media and Design

### Major(s):

Communication Studies

### Minor(s):

Sustainable Business Practices

### Hometown:

Melrose, MA

### What animal do you relate to most and why?

I relate most to a dolphin! They seem super happy and friendly.

### What would your ideal habitat be?

I would love to live in a forest next to a lake. It's calm, but within driving distance of most places.



# Alena Porter

S-LTA for Education in the Community



**College:**

College of Engineering

**Major(s):**

Computer & Electrical  
Engineering

**Minor(s):**

N/A

**Hometown:**

Saint Paul, MN

**If you could create your own animal hybrid, what would it be?**

My animal hybrid would be a Zebrant (zebra and ant) because ants are so strong and amazing, and zebras are just an underrated animal.

**What would your ideal habitat be and why?**

I would live in a rain forest because there are so many organisms that coexist.



# Kaleem Ahmid

## S-LTA for First-Year Writing



### College:

Bouvé College of Health Sciences & College of Social Sciences and Humanities

### Major(s):

Philosophy & Health Sciences

### Minor(s):

Ethics

### Hometown:

Johannesburg, South Africa

### What animal do you relate to most and why?

A Silverback gorilla : I am an A type personality that you cannot really overlook when in a group. I am working on trying to become more collaborative, and listen more, but groups seem to always want to hand me leadership roles, even though I don't think I really want them.

### If you could create your own animal hybrid, what would it be?

A Human-Elephant hybrid . I know this is super controversial and unethical (to many people), but I really want to know what kind of cognitive intelligences elephants have in those massive brains.



# Alexandra Fryman

## S-LTA for First-Year Writing



### College:

College of Science &  
College of Arts, Media, and  
Design

### Major(s):

Psychology

### Minor(s):

Communication Studies

### Hometown:

Plainview, NY

### What animal do you relate to most and why?

My ideal habitat would be a rain forest because of the variety of weather found there. Some places are very wet and hot while others are cooler. The rain forest can also support a large variety of life, meaning it would be the perfect place to observe many different animals.

### If you could create your own animal hybrid, what would it be?

If I could create my own animal hybrid, I would cross a cat and a fish to make a catfish. Cats do not like going in the water, but if I were to cross them with a fish, then they may enjoy swimming.

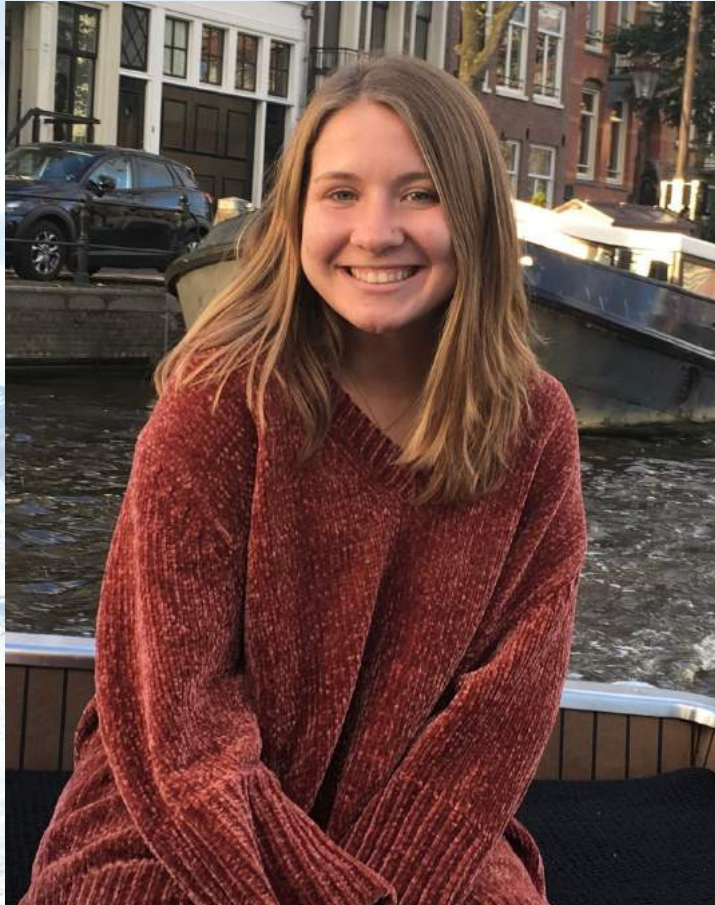
### What animal do you relate to most and why?

I relate most to the starfish because of my love for the beach and my quiet, observant nature.



# Abbey Holland

## S-LTA for First-Year Writing



### College:

College of Social Sciences  
and Humanities

### Major(s):

Human Services &  
International Affairs

### Minor(s):

N/A

### Hometown:

Washington, D.C.

What animal do you relate to  
most and why?

A turtle, I really like the  
beach/ocean and being outside and  
swimming but I also love to take  
things slow and just lay around  
without doing anything

What would your ideal habitat  
be and why?

On a tropical island that has  
both mountains and the sea  
(basically Hawaii)



# Elena Petillo

S-L Co-op and Program Assistant;  
S-LTA for Cornerstones of Engineering 1 & 2



## College:

College of Social Sciences  
and Humanities

## Major(s):

Human Services

## Minor(s):

N/A

## Hometown:

Bethesda, MD

## What animal do you relate to most and why?

A cat because I have a lot of love for the people I trust and I'm often sleepy

## If you could create your own animal hybrid, what would it be?

A flig (part fly part pig). Not only would the tiny pig be adorable, we would have a flying pig and a lot of people would have to fulfill a lot of promises

## What would your ideal habitat be?

A temperate forest so I can experience all of the seasons



# Waverly Jackson

## S-LTA for First-Year Writing



### College:

College of Science &  
College of Social Sciences  
and Humanities

### Major(s):

Psychology

### Minor(s):

Cultural Anthropology &  
Global Social  
Entrepreneurship

### Hometown:

Westwood, MA

### What animal do you relate to most and why?

I feel I relate most closely to a puppy for a variety of reasons. First, I am very energetic and love meeting new people. Running and yoga are two of my favorite activities that I engage in daily and downward-dog comes second-nature to dogs :) Most importantly, puppies love food, as do I.

### What would your ideal habitat be and why?

My ideal habitat would be up in the mountains right below the tree line. I love feeling small in comparison to my surroundings and being high up offers the privilege of seeing beyond what we normally see. The protection of the tree line would make me feel safe and it sheltered from the cold-wind.



# Asta MacKie

S-L Team Manager; S-LTA  
for Organizational Communication  
Assessment



## College:

College of Social Sciences  
and Humanities

## Major(s):

International Affairs &  
Economics

## Minor(s):

N/A

## Hometown:

San Anselmo, CA

What animal do you feel you  
most closely resemble?

A golden retriever

What would your ideal  
habitat be and why?

Either the mountains or the  
oceans! I feel a really strong  
connection to both and  
completely at home when I'm  
there.



# Elise Dinan

## S-LTA for Psychosocial Aspects of Healthcare Seminar



### College:

Bouvé College of  
Health Sciences

### Major(s):

Physical Therapy

### Minor(s):

Exercise Science  
& Psychology

### Hometown:

Cumberland, ME

What animal do you relate to  
most and why?

Golden Retrievers, because I  
feel like I match their energy -  
I'm pretty easily excited by  
things & happy & a little all  
over the place

What would your ideal habitat  
be and why?

My ideal habitat would be at  
the beach, where you can  
enjoy the sun & relax, or run  
around, jump in the water, etc.  
So many options!



# Katharine Yu

## S-LTA for Management Consulting in Organizations



### College:

D'Amore-McKim  
School of Business

### Major(s):

Business Administration,  
Management Information  
Systems & Marketing

### Minor(s):

N/A

### Hometown:

Houston, TX

What animal do you relate to  
most and why?

A puppy because they're  
cuddly and fun.

What would your ideal habitat  
be and why?

On the beach because it's  
relaxing and there's water and  
land.



# Sarah Brennan

## S-LTA for Music and Social Justice



### College:

College of Science

### Major(s):

Biology

### Minor(s):

Mathematics

### Hometown:

Hingham, MA

### What animal do you relate to most and why?

The animal I relate to most is probably a dolphin. I grew up living on the water and love going on my boat and to the beach. I also like working with others and am outgoing.

### What is your favorite dessert?

My ideal habitat would be the mountains. I love to ski and have been doing it my whole life. I also love to hike during the summers. There's nothing better than being on top of a mountain and looking at the view.



# Hannah Lesnik

## S-LTA for Information Presentation and Visualization



### College:

College of Social Sciences  
and Humanities

### Major(s):

Political Science &  
International Affairs

### Minor(s):

Ethics

### Hometown:

Aurora, IL

### What animal do you relate to most and why?

Snakes because I am always cold. I  
sometimes think I can't generate  
my own body heat.

### What animal do you relate to most and why?

Eleturtle- an elephant crossed with a  
turtle. I think it would be super cool  
for something that big to have a shell.

### What animal do you feel you most closely resemble?

Lions. I feel like we have really  
similar hair...

### What would your ideal habitat be and why?

Somewhere warm and sunny,  
probably a desert.



# Josh Sullivan

## S-LTA for Journalism 2: Intermediate Reporting



### College:

College of Art, Media,  
and Design

### Program(s):

MS in Media Innovation

### Minor(s):

N/A

### Hometown:

Cambridge, MA

### What animal do you relate to most and why?

Do you know that scene in Planet Earth II when the baby Iguana is born and then immediately has to escape the grasp of a million snakes in order to survive? That's a pretty good metaphor for what life is like in your 20s.

### What animal do you feel you most closely resemble?

An American Black Bear.

### What is your favorite dessert?

I'd combine the rabbit and a Golden Jackal, and call it a Golden Rackal. It'd be the fastest predator in the northeastern United States.

### What would your ideal habitat be?

Stick me in the mountains. I already spend the majority of my free time there anyway.



# Sara Flynn

S-L Team Manager;  
S-LTA for Community Learning 1



## College:

College of Social Sciences  
and Humanities

## Major(s):

Human Services

## Minor(s):

Law & Public Policy

## Hometown:

West Hartford, CT

What animal do you relate to  
most and why?

Sea otters because they're  
social and playful.

What would your ideal habitat be  
and why?

A forest because there would  
be lots of adventuring.

If you could create your own  
animal hybrid, what would it be?

Llamatoo: part llama, part cockatoo  
because a flying llama would be cute  
and hilarious, and they would probably  
have some interesting things to say.



# Olivia Watrous

## S-LTA for Community Learning



### College:

Bouvé College  
of Health Sciences

### Major(s):

Health Science

### Minor(s):

Spanish

### Hometown:

Guilford, CT

What animal do you relate to  
most and why?

I most relate to koala bears  
because I am small and love to  
take naps.

What is your favorite  
dessert?

My ideal habitat is under the  
sea because I love swimming  
and snorkeling.



# Sophia Gunzburg

## S-LTA for Community Learning 2



### College:

College of Science

### Major(s):

Behavioral Neuroscience

### Minor(s):

N/A

### Hometown:

Greenwich, CT

### What animal do you feel you most closely resemble?

I would say I most resemble a giraffe because I am tall and love eating plants.

### What would your ideal habitat be and why?

My ideal habitat is the beach!!  
I love the sun. I could sit and bake under the sun ALL DAY.



# Taylor Drysdale

## S-LTA for Community Learning 2



### College:

College of Science &  
College of Professional Studies

### Major(s):

Psychology & Masters of  
Teaching in Elementary  
Education

### Minor(s):

Spanish

### Hometown:

Yorktown Heights, NY

### What animal do you relate to most and why?

I relate a lot to squirrels, specifically Boston squirrels. I don't have a very long attention span and I'm not always super friendly at first, but give me food and I'll be your friend forever.

### What animal do you feel you most resemble?

I've been told that physically and personality wise I resemble a sheep and over the years it has grown on me.

### What would your ideal habitat be?

Keeping with the squirrel theme, my ideal habitat would be a tree.



# Shirley Liang

## S-LTA for Community Learning 2



### College:

College of Science &  
Bouvé College of  
Health Sciences

### Major(s):

Pharmacy

### Minor(s):

Biology

### Hometown:

Beijing, China

### What animal do you feel you most closely resemble?

I feel like I am mostly resemble cat. I am quite all the time but there might a lot of thinking in my head going on.

Also, I love stay with some close friend rather than hanging out in a big group, which I think is very cat like.

### What would your ideal habitat be and why?

My ideal habitat would be rain forest because I love warm and hydrated place. Also, rain forest have the nature smell.



# Alex Jacobs

## S-LTA for Social Change & Human Services



### College:

College of Social Sciences  
and Humanities

### Major(s):

International Affairs

### Minor(s):

French &  
Criminal Justice

### Hometown:

Gainesville, FL

If you could create your own animal hybrid, what would it be?

If I could create my own animal hybrid, it would be an elephin, which would be part elephant and part dolphin. I love both elephants and dolphins and I think that a combination of the two animals would be really playful, caring, and gentle.

What would your ideal habitat be?

My ideal habitat would be under the sea. As I grew up in Florida, I spent a lot of time swimming and at the beach. I still find swimming and being in the ocean really calming, so I think I would do really well if I lived under the sea.



# Cassandra Barrett

## S-LTA for Community Learning 2



### College:

College of Science &  
College of Social Sciences  
and Humanities

### Major(s):

Political Science &  
Biology

### Minor(s):

Health Science

### Hometown:

Miami, FL

### What animal do you relate to most and why?

I most relate to the lioness. She works hard and does most of the breadwinning in her family. She would fight for those she loves and I relate to their resilience and work ethic.

### What would your ideal habitat be and why?

My ideal habitat would be wherever it's sunny during the day but cool at night. I don't know where that is but it's my favorite climate.



# Olivia Harris

## S-LTA for Social Change & Human Services



### College:

College of Social Sciences  
and Humanities

### Major(s):

Political Science &  
Human Services

### Minor(s):

Law and Public Policy

### Hometown:

Daytona Beach, FL

### What animal do you relate to most and why?

Hippo - They love the water and eating! They can also be social animals but when they do not want to be bothered you should stay far away.

### What would your ideal habitat be?

My ideal habitat would be a city park because you get to have nature and animals with all of the convenience of a near by city.



# Benjamin Sanders

S-L Street Team Manager



**College:**

College of Science

**Major(s):**

Behavioral Neuroscience

**Minor(s):**

Biochemistry

**Hometown:**

Piermont, NY

**What animal do you relate to most and why?**

I relate to the pajama squid. First of all I enjoy being in and on the water so it has to be some sort of marine creature. I chose the squid specifically mostly because my love for neuroscience stemmed from research and experiments done in squid. I also enjoy sleeping and cozy pajamas so that's self-explanatory.

**What would your ideal habitat be and why?**

My ideal habitat is definitely the ocean. I always seem to find peace anywhere near the water or being out on the water, and being out on the ocean completely surrounded by water is such a surreal experience.



# Tyler Nicholson

S-L Street Team



**College:**

College of Science

**Major(s):**

Biology

**Minor(s):**

American Sign Language

**Hometown:**

Bourne, MA

**What animal do you feel you most closely resemble?**

A turtle!

**What would your ideal habitat be and why?**

I would live up in the mountains-I love snowy weather!



# Lauren Silva

S-L Street Team



College:

College of Science

Major(s):

Psychology

Minor(s):

N/A

Hometown:

Warwick, RI

What animal do you feel you most closely resemble?

With my hair, definitely a lion!

What would your ideal habitat be and why?

Anywhere near the water because it will always be fun and relaxing.



# Arunkumar Prabhakaran

## S-L Street Team



### College:

College of  
Professional Studies

### Current Program:

MS in International  
Regulatory Affairs

### Minor(s):

N/A

### Hometown:

Chennai, India

### What animal do you relate to most and why?

Off course, Dog. When I was little, my grandfather had a Pomeranian I used to play with that daily.

### If you could create your own animal hybrid, what would it be?

Dog + Cat = DC, it sounds funny, but I always wonder dogs and cats are rival's. So, I wanna see what happens if there is any hybrid of them.

### What animal do you feel you most closely resemble?

Chimpanzee

### What would your ideal habitat be?

Hill stations, I love to be in Hill stations bcz, they are covered with lots and lots of giant tall trees and colorful leaves and flowers and we can find rare plant species too.



# Akshay Kaushik

S-L Street Team



## College:

College of Engineering

## Program(s):

MS in Data Analytics  
Engineering

## Minor(s):

N/A

## Hometown:

New Delhi, India

## What animal do you relate to most and why?

I think I relate to fish the most - because like them I am pretty agile and am always moving fast with my life experiencing and learning things along the way.

## What animal do you feel you most closely resemble?

I would say the red panda, because that is basically is me in the picture after the end of a day most of the times. No matter how much I work, one thing I need the most is my 8-hours of uninterrupted sleep :)



# Shiko Githere

## S-LTA for First-Year Writing



### College:

College of Science

### Major(s):

Behavioral Neuroscience

### Minor(s):

Global Health

### Hometown:

San Leandro, CA

### What animal do you feel you most closely resemble?

I feel like I somewhat resemble a cat. In particular, I feel like we have a similar heart-shaped face. A pointy chin and then a larger top of the head.

### What would your ideal habitat be and why?

I think I would really like to live under the sea. The ocean is extremely vast and diverse; and I feel like it would be really great to be able to explore all of the hidden and unknown parts.



# Shraeya Srinivasan

## S-L Street Team



### College:

Khoury College of  
Computer and Information  
Sciences

### Major(s):

Data Science

### Minor(s):

N/A

### Hometown:

Foxborough, MA

### What animal do you relate to most and why?

The animal I relate to most is the bottlenose dolphin for its distinct traits including intelligence, kindness, lightheartedness, cheerfulness, and social nature. I have always been a very hardworking and diligent individual, and that has consistently reflected in my academics. I am also very compassionate and considerate of others. I always try to keep a positive outlook on life and enjoy my everyday activities because I try to be passionate about everything I do.

### What would your ideal habitat be and why?

My ideal habitat would be savannas, specifically the beautiful, panoramic African terrains because it is home to the most majestic animals on the planet. I travelled to Kenya a couple summers ago, and I was blown away by its beauty and picturesque landscapes. Its reserves are abundant and flourishing, and its species thrive there.



# Joy Tang

S-L Street Team



## College:

College of  
Professional Studies

## Major(s):

Corporate and  
Organizational  
Communication

## Minor(s):

Public and Media  
Relations

## Hometown:

Zhengzhou, China

## What animal do you relate to most and why?

I would like to choose dogs. Because dogs are very loyal. I also have a very cute puppy called candy, and she has been with me for almost 9 years and she is one of my family members now. She can understand my feelings and always stay with me.

## What would your ideal habitat be and why?

Along the coast. I especially like to listen to the sound of the waves, it will make me feel particularly relaxed and comfortable. I also like watching the sunrise and sunset. I can see such beautiful scenery every day when I live by the sea.



# Ruthanne Bandy

S-L Program Assistant



**College:**

College of Social Sciences  
and Humanities

**Major(s):**

Human Service

**Minor(s)**

International Affairs

**Hometown:**

Loudonville, OH

What animal do you relate to  
most and why?

I relate to sloths in so many ways. I can sleep almost anywhere, anytime. I once slept for 18 hours straight. Also, they are very solitary creatures, spending most of their time alone. I would consider myself an introvert at heart.

P.S. Sloths are not comfortable being around humans so don't ever support an organization that allows you to hold a sloth.

What animal do you feel you  
most closely resemble?

I would love to live in the foothills of a mountain by a stream. I love forests and being surrounded by nature. I hope to someday be able to grow most of my own food and fall asleep to the sound of water.



# Courtney Woodman

S-L Graduate Assistant



**College:**

School of Law &  
College of Arts, Media and  
Design

**Degree(s):**

B.S. in Psychology

**Current Program:**

MS in Media Advocacy

**Hometown:**

North Easton, MA

**If you could create your own animal hybrid, what would it be and why?**

A Wurtle (wombat + turtle)  
because I could mix together  
the best parts of my favourite  
animals.

**What would your ideal habitat be and why?**

The rainforest, because that's  
where pygmy hippos live and  
they are my favourite (as long  
as they aren't attacking me)

**What animal do you relate to most and why?**

Either a quokka because they love to  
explore and meet new people or a  
platypus because even though they  
are tiny, they pack a mean punch!



# Sophie LaCortiglia

S-L Graduate Assistant



## College:

College of Social Sciences  
and Humanities &  
School of Law

## Degree(s):

B.A. in Legal Studies &  
B.A. in Italian Studies

## Current Program:

JD/MS in Criminology &  
Criminal Justice

## Hometown:

Georgetown, MA

What animal do you relate to  
most and why?

I relate most to prairie dogs,  
because they always look  
anxious and I feel that

If you could create your own  
animal hybrid, what would it be?

I would hybridize an elephant and a  
corgi because I think an  
elecorgphanti would be the perfect  
house pet - it would look just like an  
elephant but be the approximate  
size of a welsh corgi and have  
stumpy corgi legs

What animal do you feel you  
most closely resemble?

I'm a house cat. I need 23+ hours  
of sleep a day and I demand  
attention at all times but only  
accept it when I want it

What would your ideal habitat  
be and why?

I would love to be able to live like a  
clown fish in a sea anemone in a  
coral reef. Sea anemones offer  
adequate protection from predators  
and coral reefs offer fantastic  
diversity of species, plus they're  
bright and colorful



# Becca Berkey

## Director of Service-Learning



### College:

Explore Program &  
College of Social Sciences  
and Humanities

### Degree(s):

BS, Biology; MS College  
Student Personnel; PhD,  
Environmental Studies

### Current Program:

N/A

### Hometown:

Terre Haute, IN

What animal do you relate to  
most and why?

Squirrels- I really relate to their survival instinct and their frenetic energy, and also that they're just very c'est la vie about their diet (Acorns? Okay. I found a whole slice of pizza in the trash? That sounds good too:). Also, they're an animal that people seem to really like or really not like, and I can relate to that. They're just out there living their best life, and the haters can step on by!

If you could create your own  
animal hybrid, what would it be?

I would combine an elephant and a rhino to make an eliphino (okay, that is just one of my favorite cheesy jokes of all time, and I loved it when I was a kid because I felt like it was cheat cursing!).



# Lisa Roe

Assistant Director of Service-Learning;  
S-L Faculty



## College:

College of Professional  
Studies & College of Social  
Sciences and Humanities

## Degree(s):

BA in Sociology; MEd in  
Higher Education  
Administration

## Current Program:

Edd in Higher Education  
Administration

## Hometown:

Bedford, MA

If you could create your own  
animal hybrid, what would it be?

eledog (part elephant and part dog) -  
because both animals make my heart  
happy!

What would your ideal habitat be?

Mountains/lake, but from a  
window view of a cabin :)